

Unitarian Universalist Church of Nashua

09/18/2022

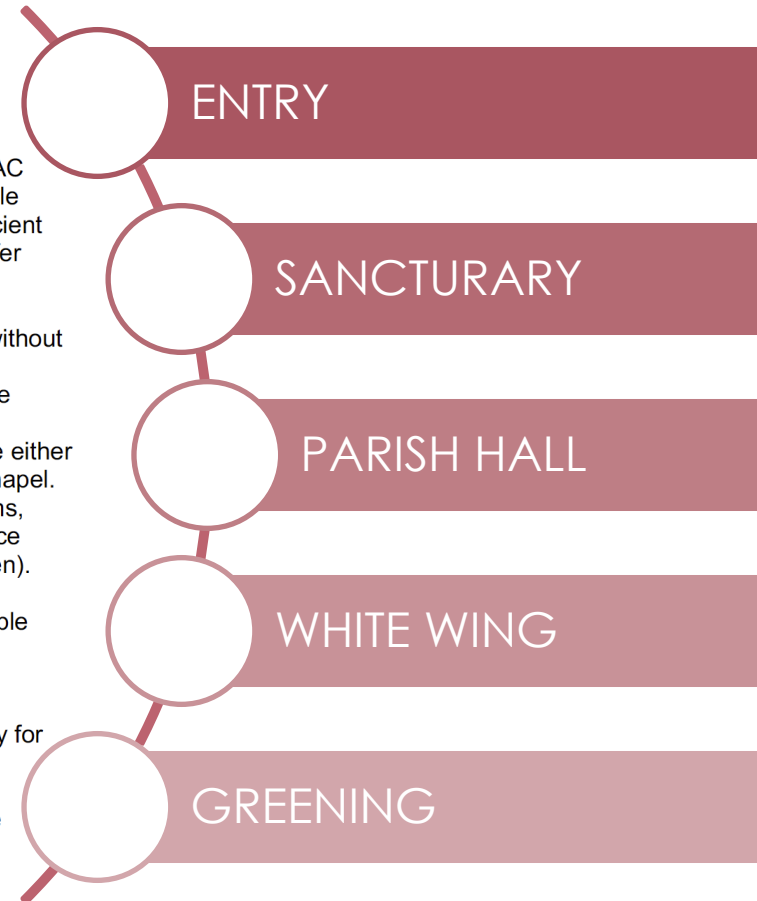
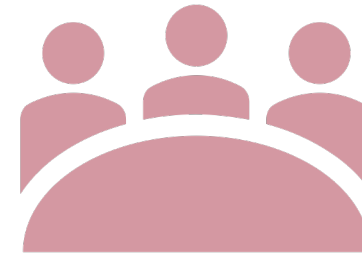
Task Force Progress Report





Church Building Project Goals Summary:

- 1) Making the building more energy efficient. This includes an overall review of our entire HVAC system to be modern and energy efficient, and well managed heating/cooling to keep people comfortable. When possible, not impact our historic appearance. For example: Energy efficient windows; Insulation; Fans to bring warm air down from the tall sanctuary that could also offer cooling; Ways to use less artificial light; Make all lighting energy efficient; Energy efficient appliances.
- 2) There is safe passage between the education / administration wing and the parish house without interrupting an event in the sanctuary.
- 3) All entrances and areas of the church are accessible to all, including the chancel area in the sanctuary.
- 4) We have modern technology which allows for multi-platform worship. Congregants who are either off site or elsewhere in the campus can be part of an event occurring in the sanctuary or chapel. This includes Teleconferencing / worshiping and livestreaming abilities in our meeting rooms, classrooms, sanctuary, and chapel, with internet capabilities. Also, a capability to experience Sunday service/programs (i.e. audio and visual) in other spaces (ie. dining room and kitchen).
- 5) Family/gender neutral bathrooms
- 6) Becoming carbon neutral by either eliminating carbons or offsetting carbons we use. Possible examples include: Switching out our gas burning heating for heat pumps or using solar.
- 7) A safe, defined walkway to the front of the church.
- 8) A designated main entrance with signage that provides direction on where to go
- 9) We have maintained the ambience of an older New England church while allowing flexibility for broader, more inclusive use of our sanctuary and chapel
- 10) Tell our story: who we are, our key contributors, our social justice contributions with the community, and how we've help change the world. Place an emphasis on stories about the contributions and accomplishments of the people of our church, not just the buildings



GREENING task force

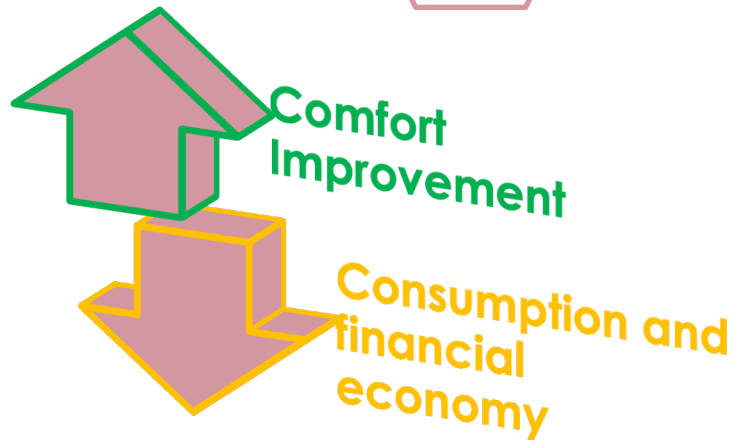
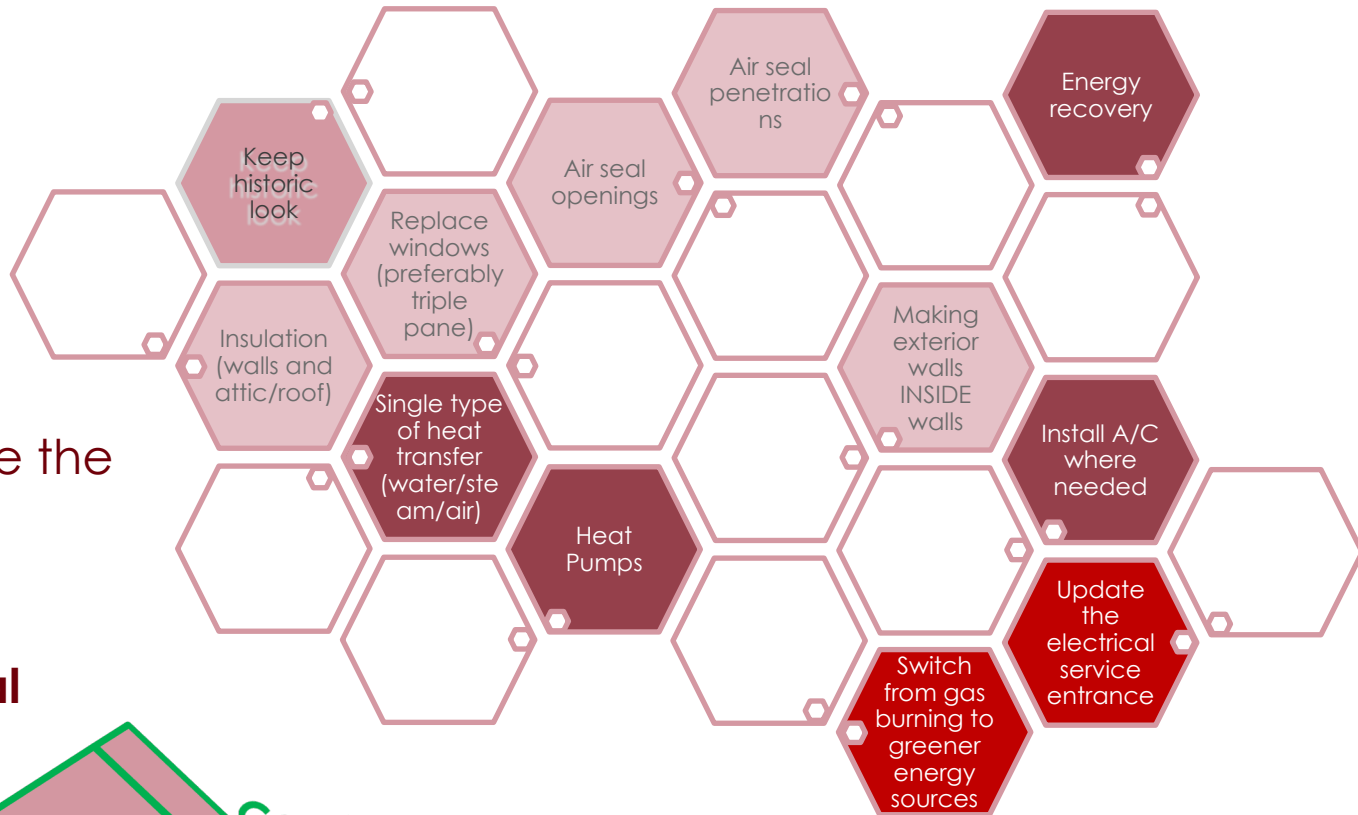
Improve the building envelope

- Insulation
- Windows
- Air tightness

Energy efficiency

- Improve or replace the existing/old HVAC systems

Become carbon neutral



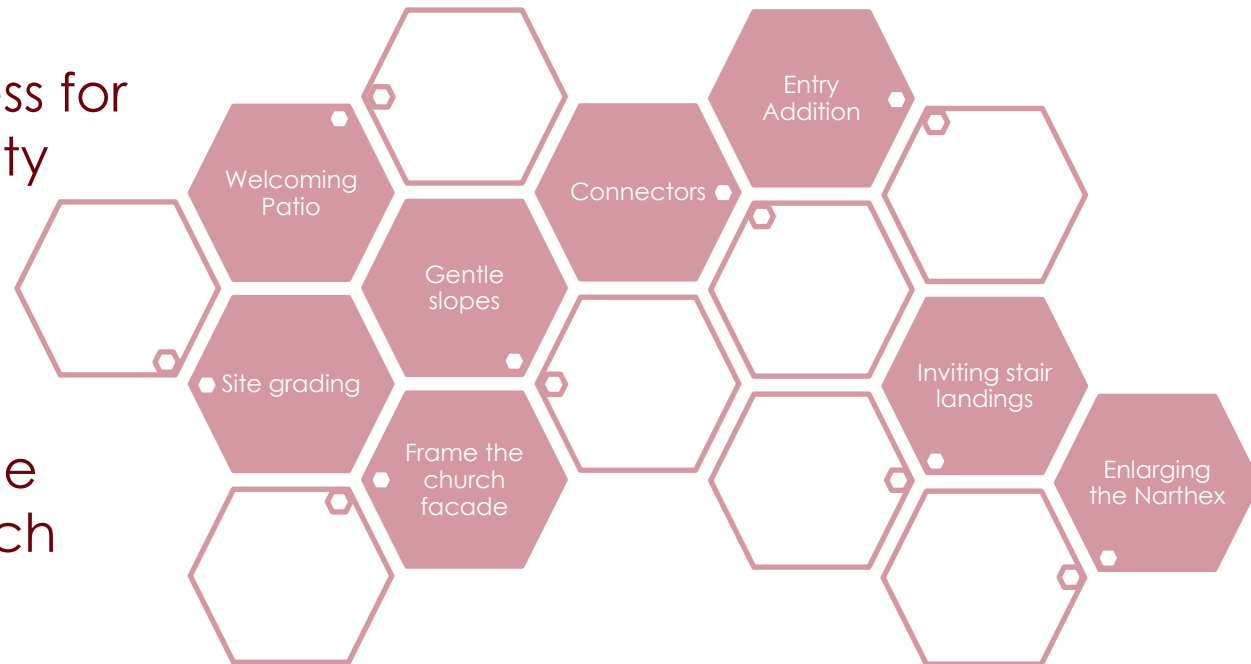
ENTRY task force

- **Path finding / Circulation**

- provide a single entrance, and help visitors find their way intuitively on the campus
- Navigate the campus without disturbing its activities

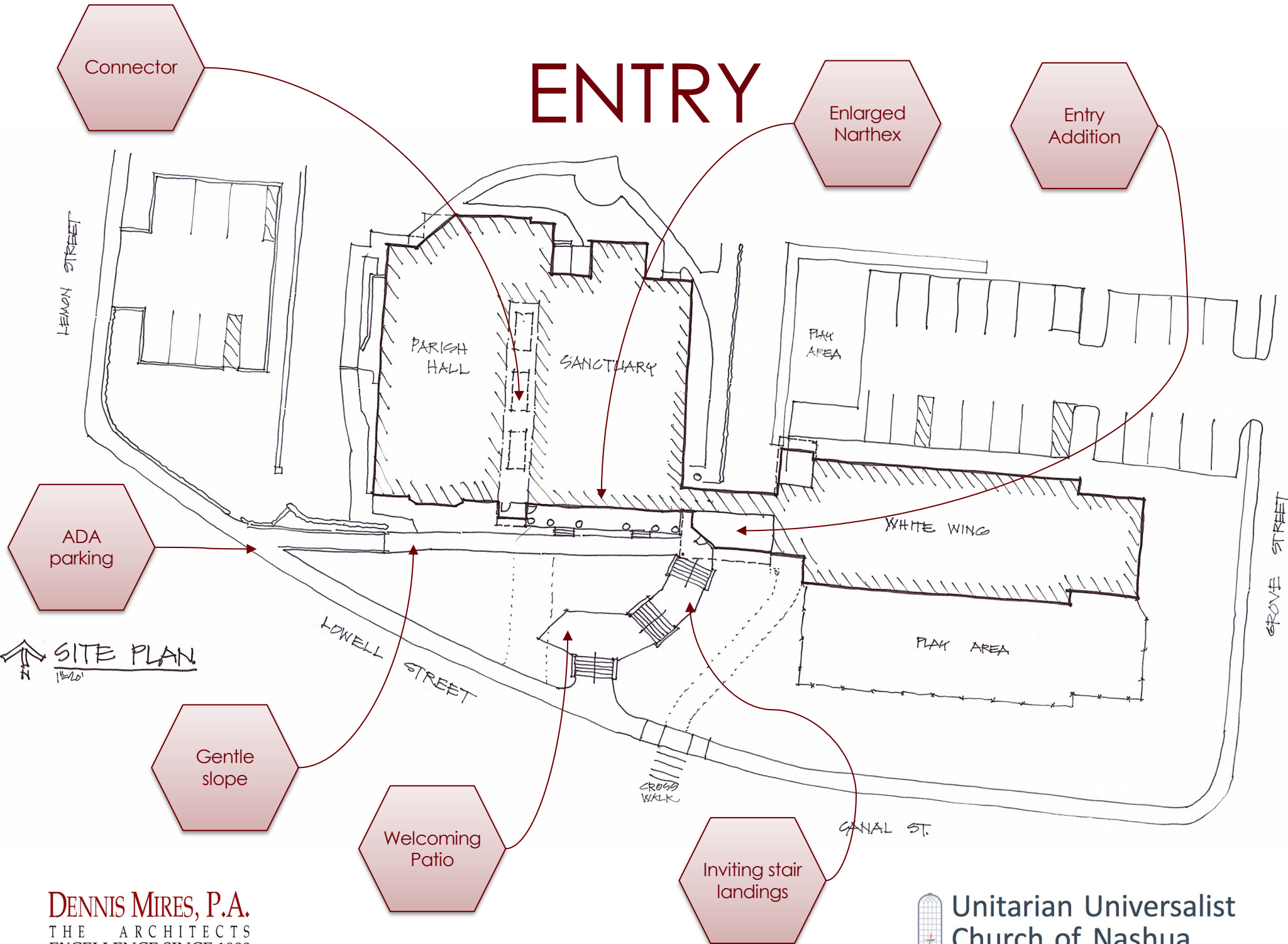
- **Accessibility** – easy access for the entire range of mobility

- Present a **unified** and **coherent** face to the world, while preserving the identity and history of each building of the campus



- Mitigate the image of a **fortress** atop an inaccessible mountain

ENTRY



Connector

Enlarged
Narthex

Entry
Addition

HEMON STREET

PARISH
HALL

SANCTUARY

PLAY
AREA

WHITE WING

PLAY AREA

GROVE STREET

ADA
parking

↑
SITE PLAN
1/8/20

LOWELL STREET

CROSS
WALK

CANAL ST.

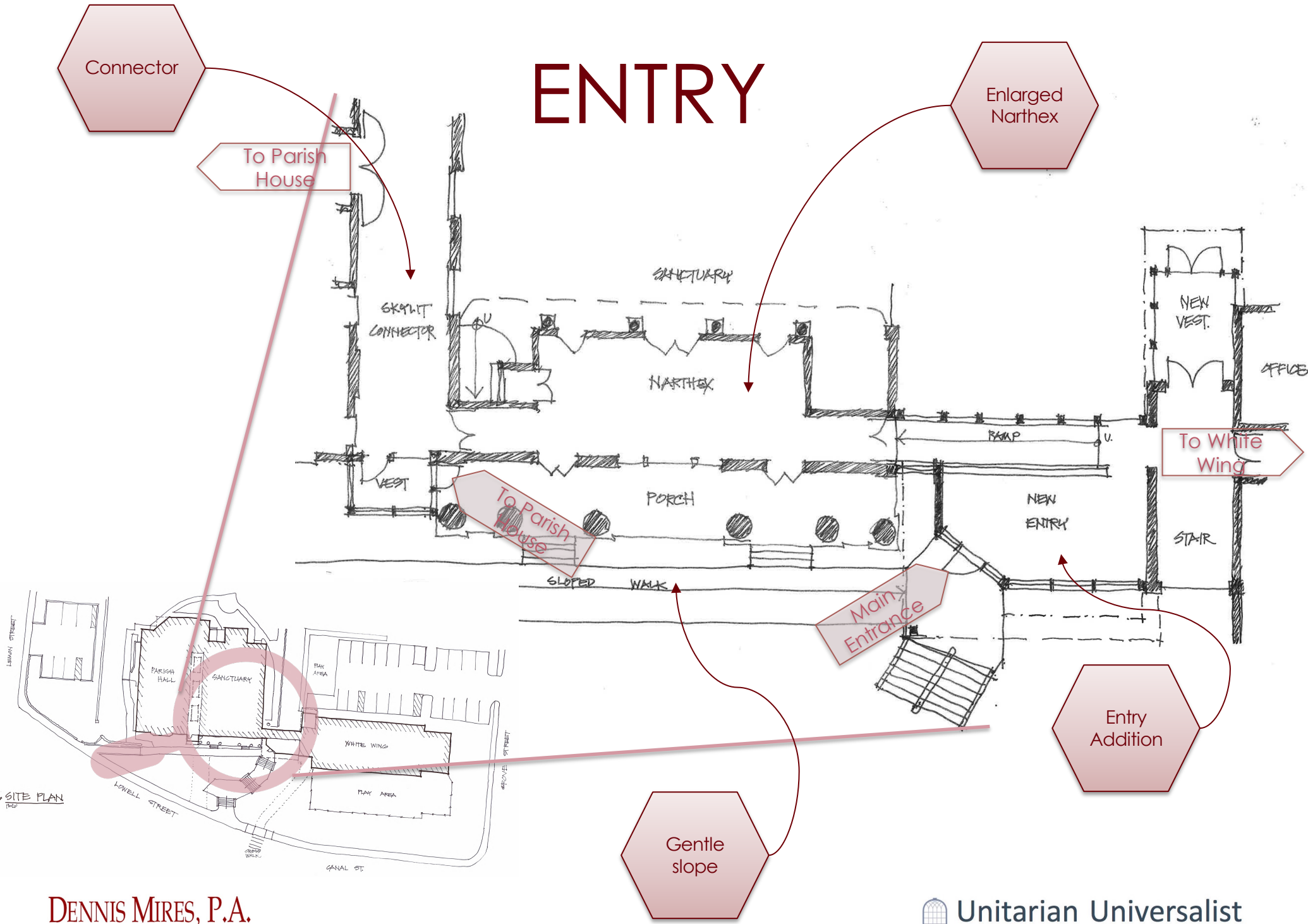
Gentle
slope

Welcoming
Patio

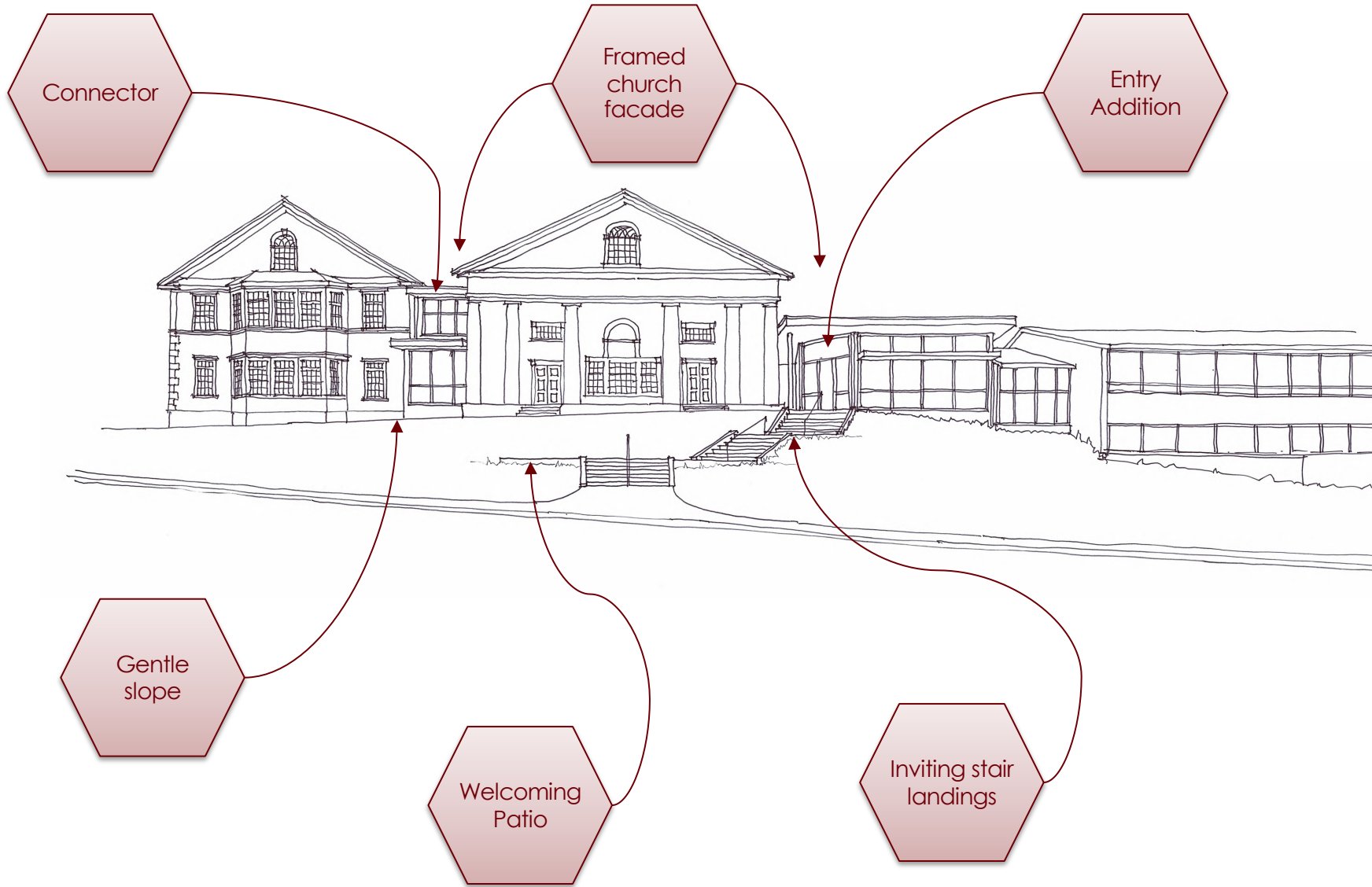
Inviting stair
landings



ENTRY



ENTRY





DENNIS MIRES, P.A.
THE ARCHITECTS
EXCELLENCE SINCE 1980

 Unitarian Universalist
Church of Nashua

SANCTUARY task force

- **Chancel accessibility** – No stair, no long ramp
- **Chancel flexibility** – Organ, choir, piano, pulpit,

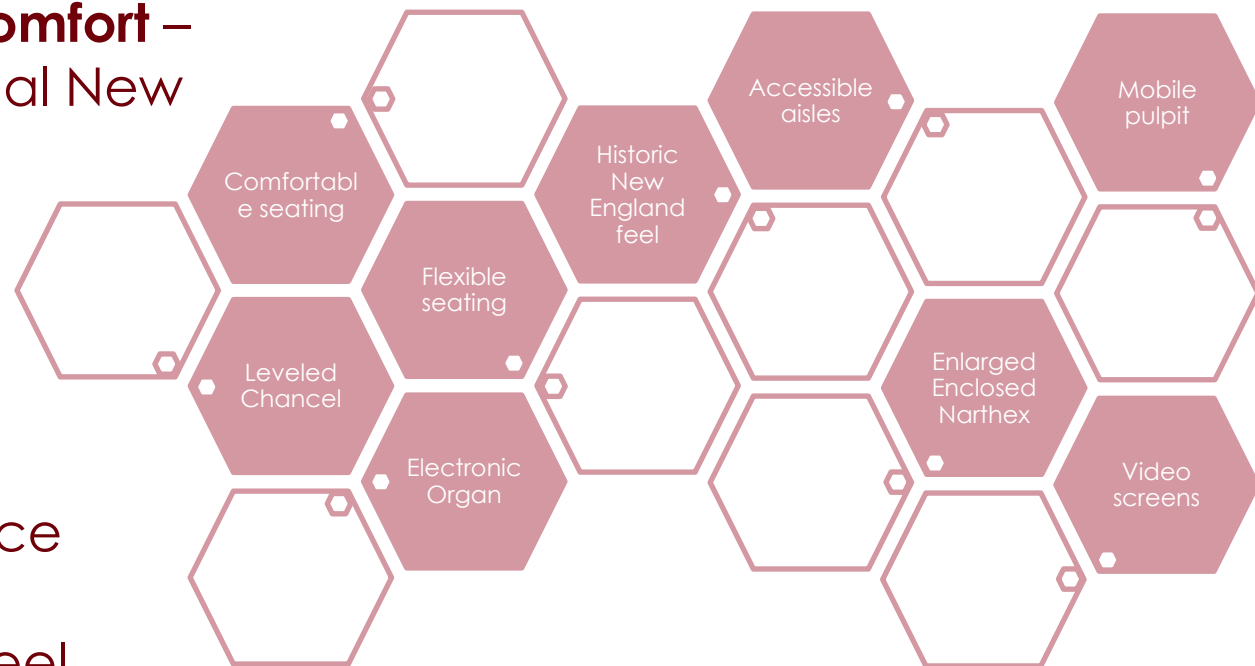
- **Seating: Flexibility and Comfort** – while keeping the historical New England feel

- Comfortable **HVAC**

- Improved **lighting**

- **No disruption** of the service

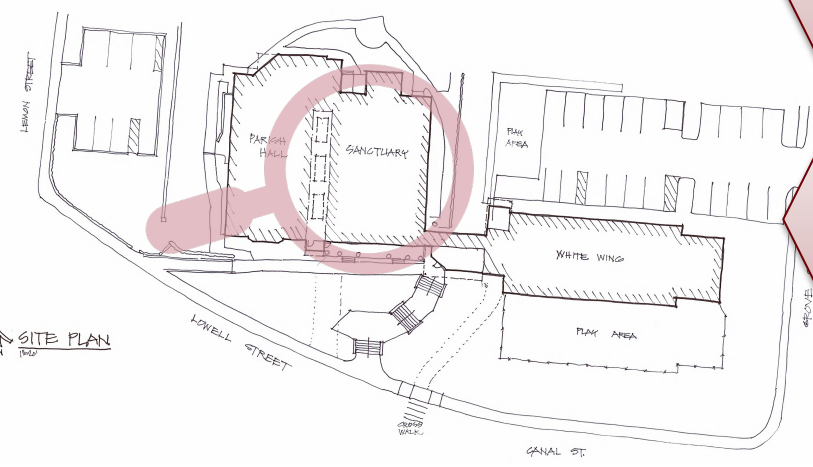
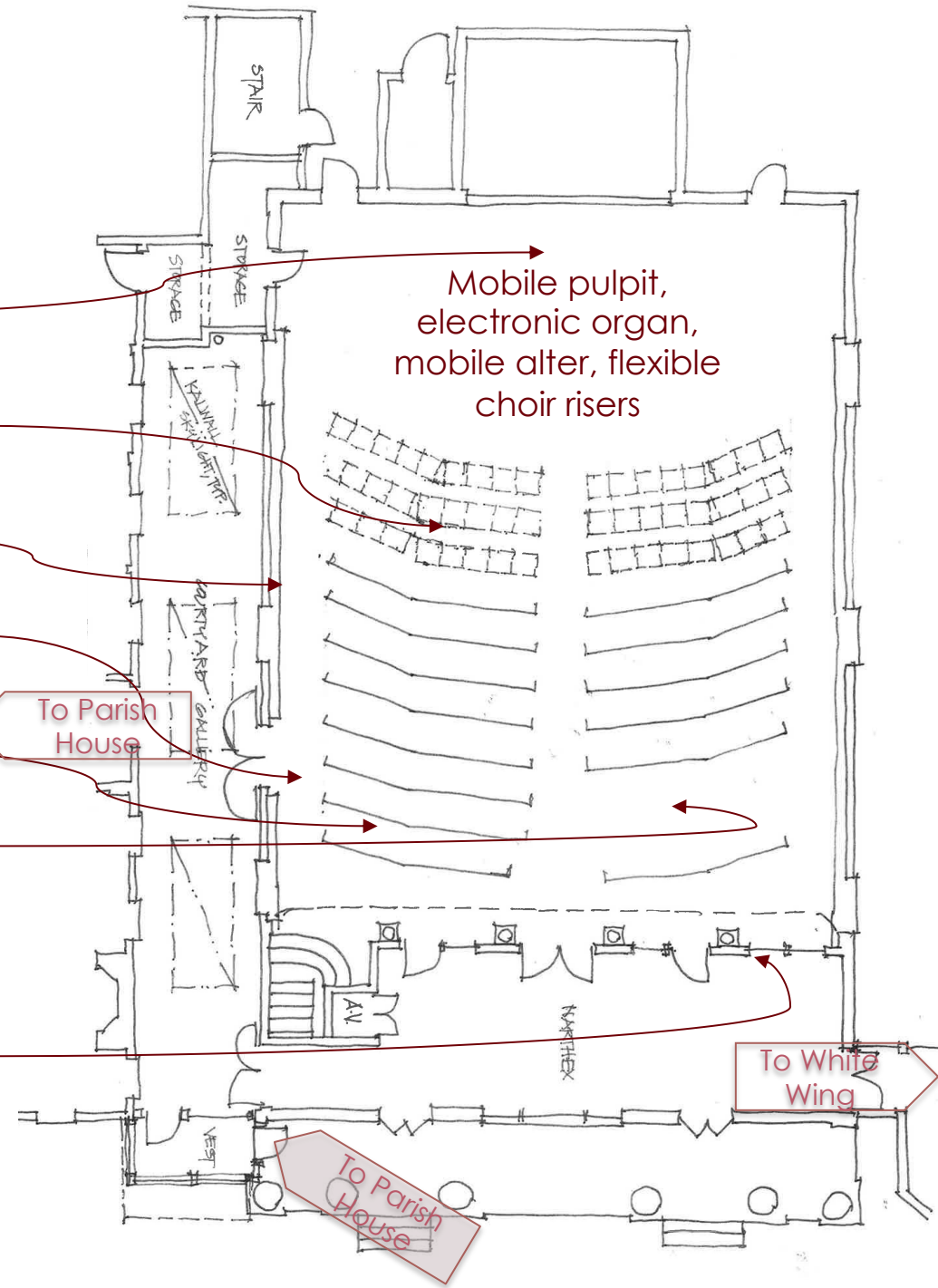
- **Historical** New England feel



SANCTUARY



- Leveled Chancel area
- Flexible comfortable seating
- New HVAC
- Accessible Aisles
- Retained Pews
- Improved lighting
- Enclosed Narthex



SANCTUARY



PARISH HOUSE task force

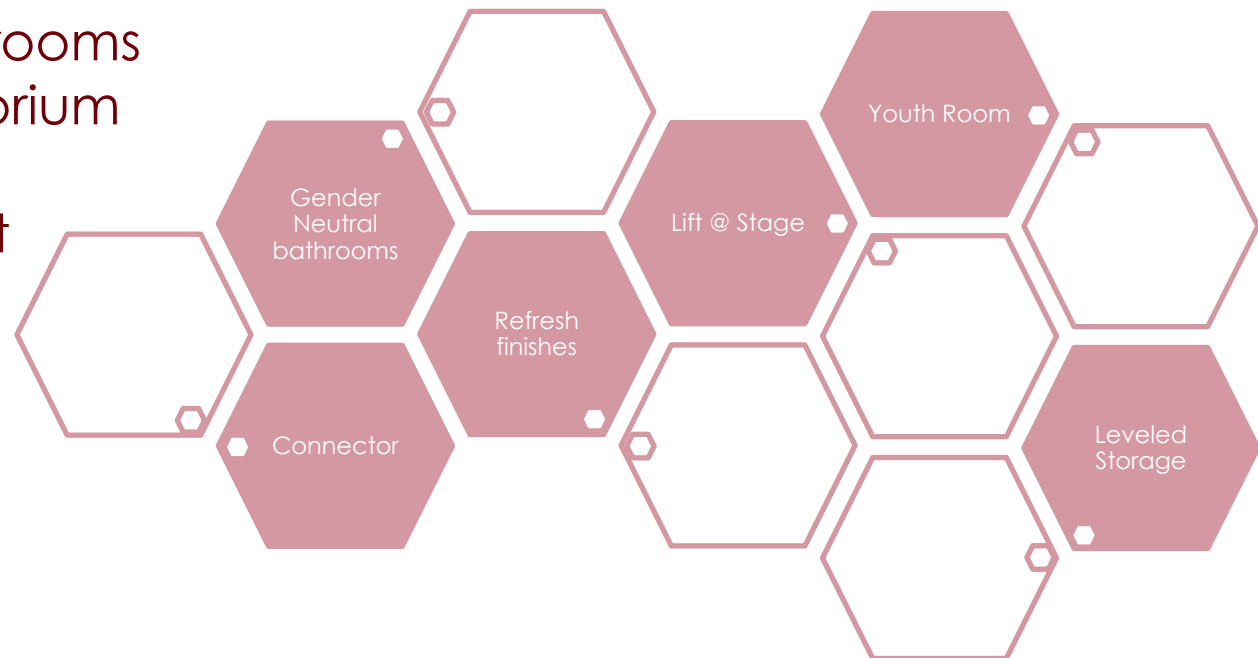
- **First Floor**

- Finish refresh
- Courtyard drain

- **Second Floor**

- Finish refresh
- Gender neutral bathrooms
- Accessibility to auditorium stage
- Storage on stage: not practical

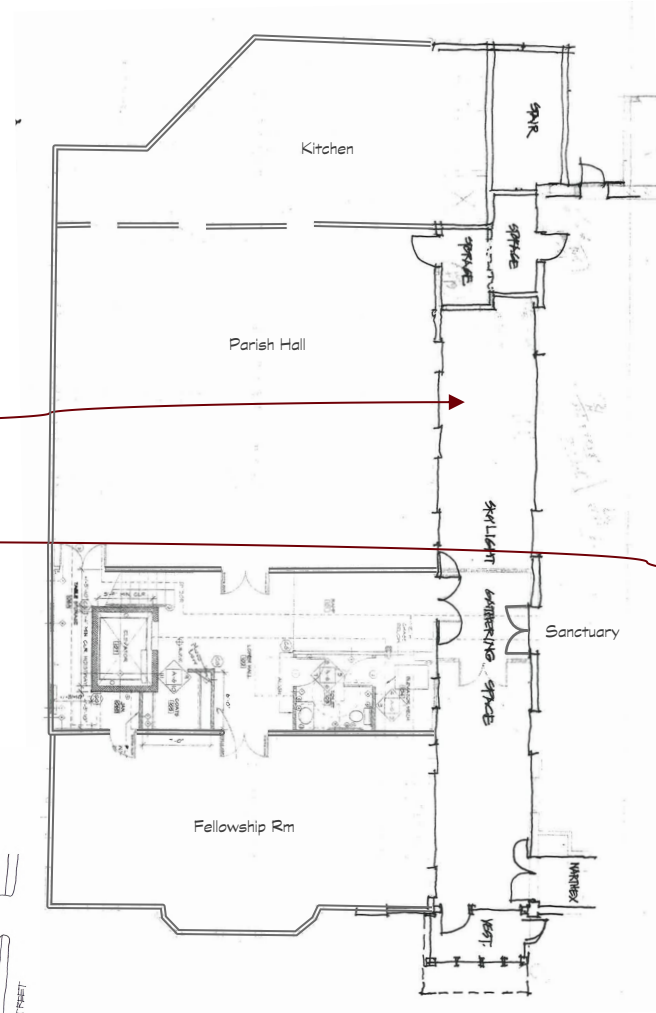
+ Greening



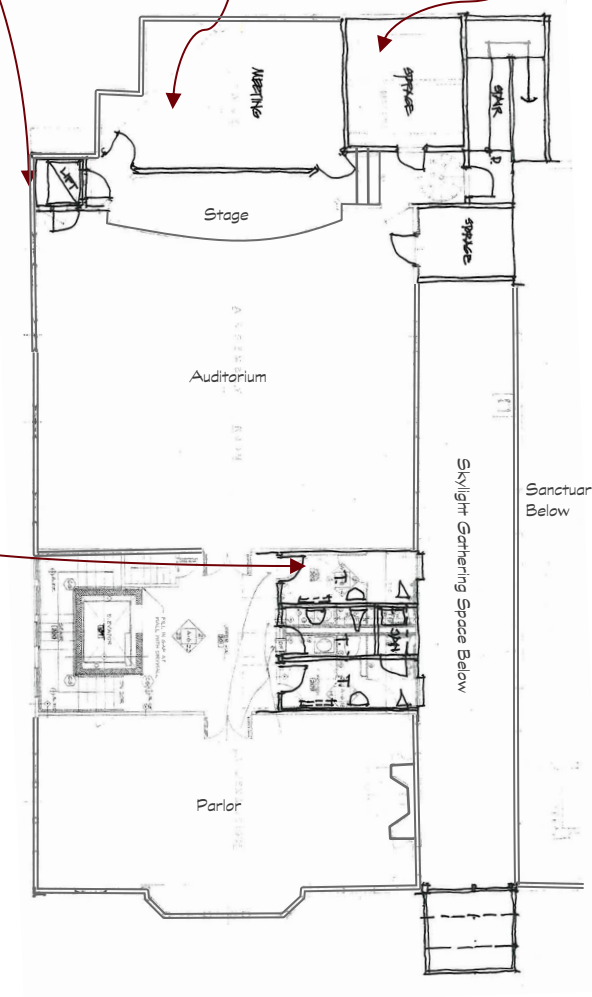
PARISH HOUSE

- Lift
- Youth Rm @ Stage
- Leveled storage

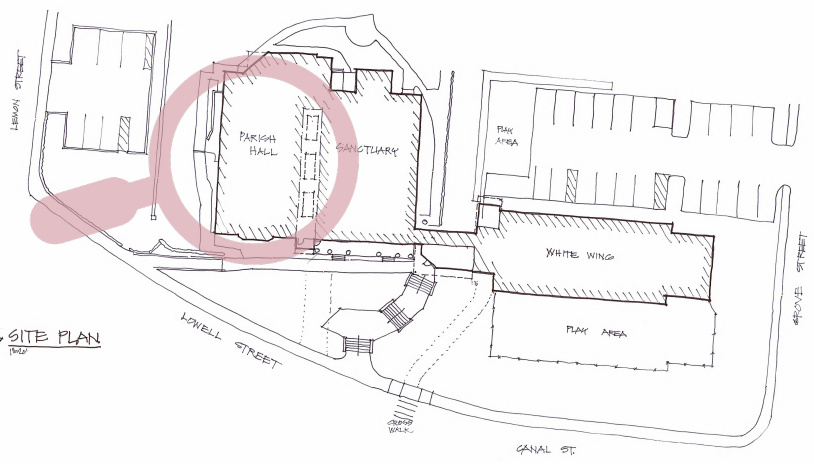
- Connector
- General finishes refresh
- Gender Neutral bathrooms



First floor



Second floor



WHITE WING task force

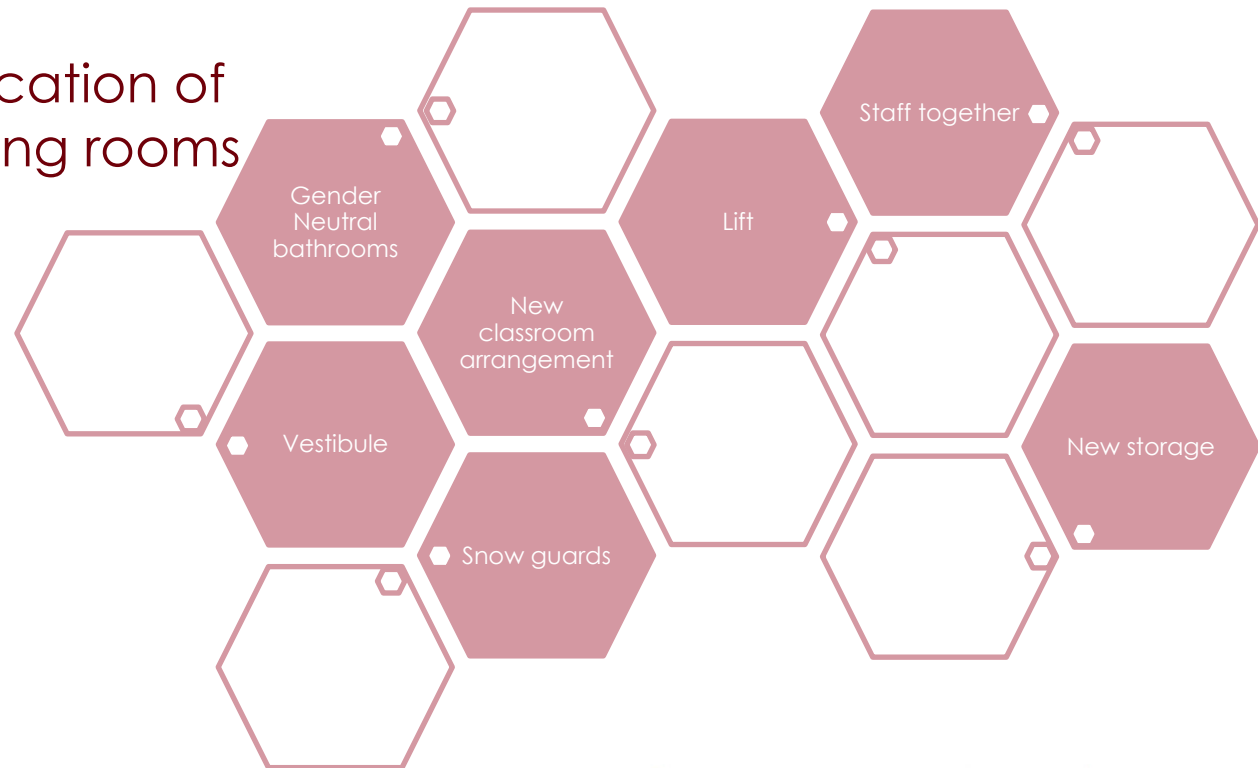
- **Upper Floor**

- Accessibility
- Gender Neutral bathrooms
- Too many chairs in the Chapel
- Archives and office storage
- Regroup staff offices
- Adjust the size and location of the classrooms/meeting rooms

- **Lower Floor (school)**

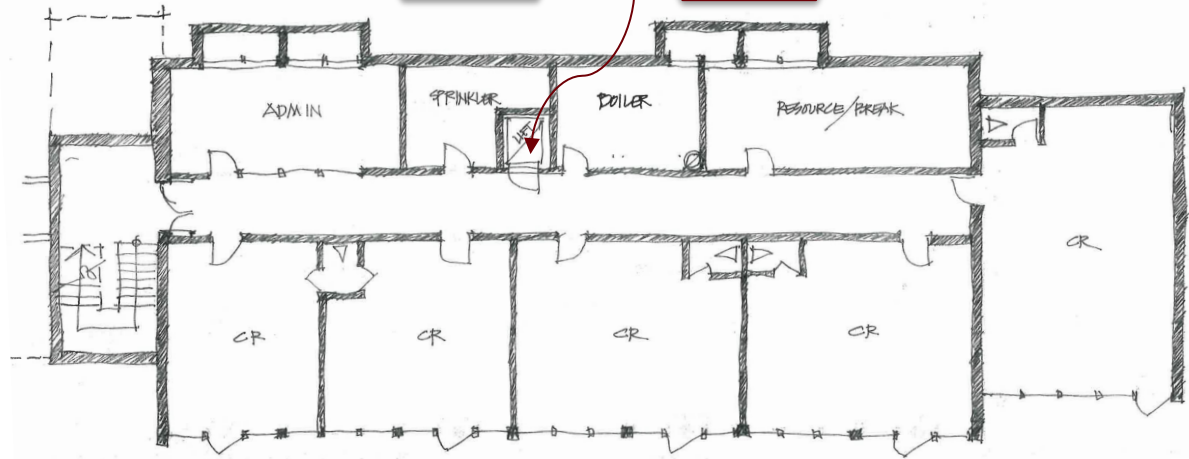
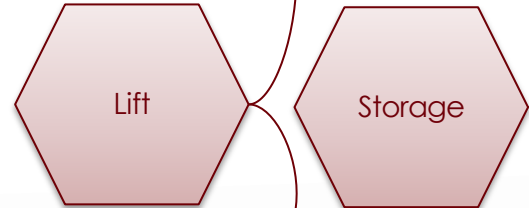
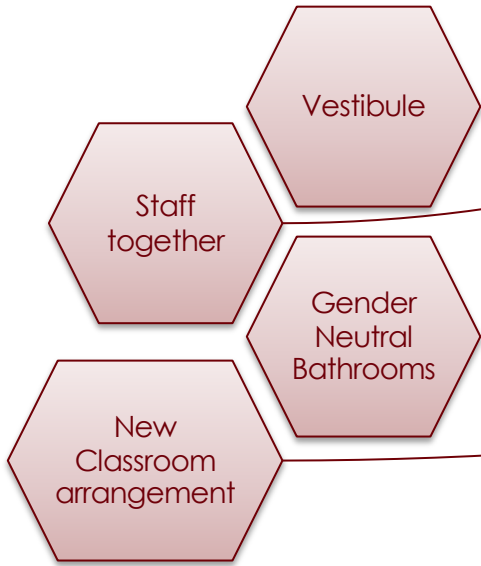
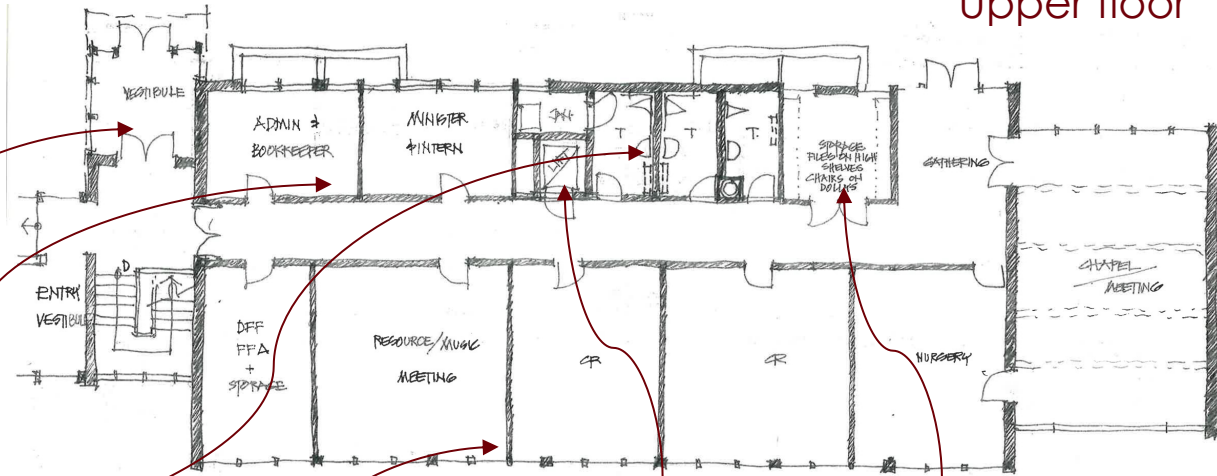
- Accessibility
- Snow falling

+ Greening

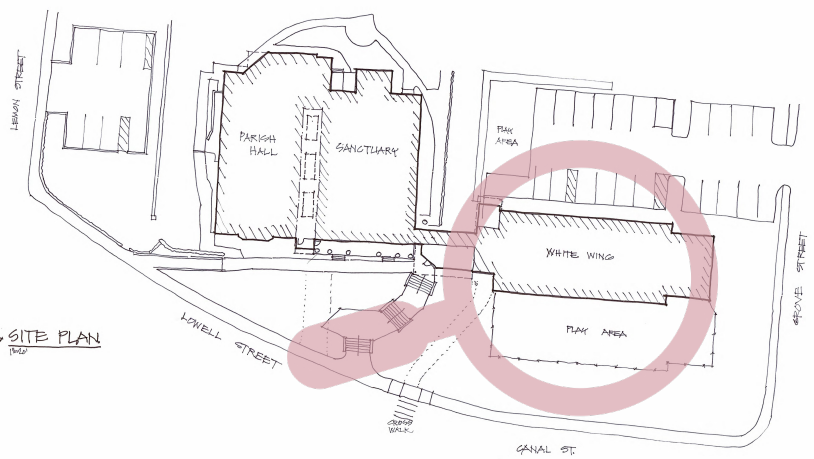


WHITE WING

Upper floor



Lower floor - School



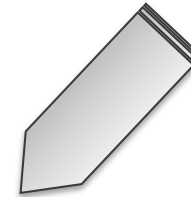
Priorities



- ENTRY
- SANCTURARY
- PARISH HALL
- WHITE WING
- GREENING



LONG TERM
MASTER PLAN
FOR THE
CAMPUS



Phased
Implementation



- Good understanding – Please ask us any question!
- Feedback to BOV and Tasks Force

